



onYsID

swipe reader



Read personal data out of the machine-readable zone from documents such as passports, ID cards, driver's licenses (if applicable). The bi-directional swipe slot guarantees easy and hassle-free handling even for non-experienced users. The bright, multicolor LEDs give a clear and highly

visible status feedback. You decide where to install the onySwipe, using one of the 6 flexible routing positions for the USB cable.

Smart and stylish design - all of the above is managed in a device housing as compact as an iPhone!



Easy to use

Bi-directional usage of swipe slot possible. User guidance system on both ends for best handling and read results.



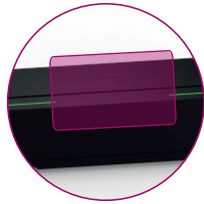
Energy-efficient & flexible routing

USB powered including built-in cable channel with 6 flexible routing positions on the device bottom.



Status indicators

2x multicolor status LEDs. Placed next to swipe slot for best visibility and clear feedback on device status and read results.



ePassport & NFC tag reading

Optional built-in antenna makes NFC and biometric chip reading possible. Just tap the document or device against the onySwipe to start the reading process.



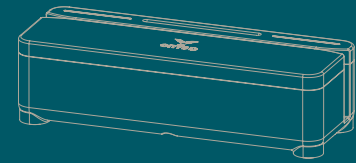
Contact Chip Card reading

Optional built-in contact chip card reader allows you to insert card for contact chip reading within seconds.



Mounting options

Multiple mounting options possible. Secure the onySwipe on a flat surface such as a table, counter top or wall. Mounting to a screen is possible with additional VESA mount.



onySwipe

DOCUMENTS



USAGE

Read data from MRZ (ICAO 9303). Optional: ePassport and NFC or contact chip card reading.

SPECIALITY

Available as standalone or OEM version.

TECHNICAL DETAILS

- USB 2.0 connection
- Interfaces: VCOM, PCSC (RFID & NFC reading)
- NFC & RFID reading possible according to ISO 14443 A/B
- Contact chip card reading according to ISO 7816
- Audible feedback via buzzer
- USB powered
- Various cable outlets
- Various mounting options: screw inlets in device base
- Compliant to: WEEE, RoHS, FCC and CE (EN55032 ClassB)

MEASUREMENTS

Standalone:	140 x 50 x 41 mm, 5.5 x 2 x 1.6 inches
OEM:	approx. 72 x 35 x 16 mm, 2.8 x 1.4 x 0.6 inches
Cable:	1.8 meters 70.86 inches