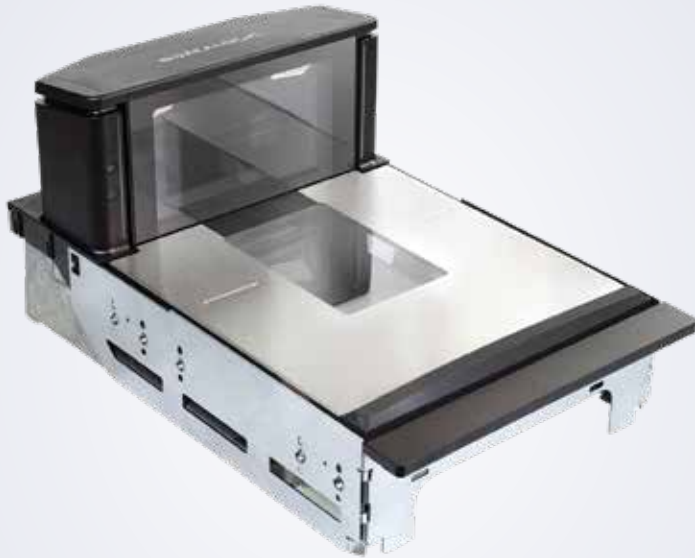


# MAGELLAN™ 9600i



## Scanning Excellence with an AI Edge



### THE NEXT GENERATION IS HERE

The #1 selling 'in counter' scanners for assisted and self-checkout are now even better. Fresh styling, rugged design, industry-leading scan performance and new options that enable Artificial Intelligence (AI) at the checkout put the Magellan 9600i portfolio in a class of its own.

With basic and advanced configurations, the 9600i scanner and scanner/scale is the perfect companion for Point of Sale (POS) systems in all high throughput checkout environments.

The ability to choose from 3 chassis lengths and multiple checkstand mount options allows customers to have a tailored solution that solves all of their assisted and self-checkout needs.

### ENHANCING THE CASHIER OR CUSTOMER EXPERIENCE

Packed with the latest imaging technology, the 9600i scanners feature the largest scan volume in their class. This ensures fastest read rates and ease of use regardless of 1D, 2D, GS1 or Digimarc® symbologies.

The new Magellan scanners feature capacitive touch buttons and smooth surfaces to ensure the above counter areas are easy to clean and sanitize.

The 9600i offers an optional external mounted customer-facing reader enabling customers to scan mobile devices and coupons independent from a cashier in assisted lanes.

### FEATURES FOR TODAY AND THE FUTURE

Magellan 9600i is powered by QuadVision™, a multi-core processor and multi-camera system with embedded Linux operating system to future-proof the platform. ScanSentry™ color camera options and neural processors result in a checkout that is fully enabled to support Artificial Intelligence (AI) software that will boost customer satisfaction and dramatically improve loss prevention.

## FEATURES

- Magellan 9600i features QuadVision™, a powerful IMX8 multi-core processor utilizing 4 cameras (2 horizontal and 2 vertical) that will deliver multiple high resolution images for each scan. Combine the powerful processors, 5-sided image capture and Datalogic's legendary software and you have previously unheard of performance to decode the most difficult and damaged barcodes. In addition, two optional color cameras can be used for machine learning image capture and simultaneous video streaming via Ethernet or USB 3.0 for loss prevention in future releases.
- Optional built-in neural processors and accelerators enable trillions of operations per second inside the scanner eliminating a need for extra servers or cloud connections at the checkout.
- Be ready for the future GS1 Digital Link symbology which links valuable manufacturing and health safety details to each transaction.

## INTEGRATED LOSS PREVENTION

### ScaleSentry Technology

- Monitors the sides of the scale platter with an infrared (invisible) beam to detect if fruit or produce is misplaced on the scale platter causing the item to be under-weighted.

### All-Weights™ Scale Platter

- The All-Weights scale platter design provides a total scanner weighing surface including the top of the bonnet, allowing the user to properly weigh produce that is too long to fit on the platter surface.

### ScanSentry

- The 9600i can detect item movement across the platter and alert the POS system if no barcode was detected. This can be augmented with color cameras and Artificial Intelligence to create 'best in class' loss prevention and item recognition solutions.



# MAGELLAN 9600i (Scanner only: 9610, 9611, 9612; Scanner/Scale: 9621, 9622)

## TECHNICAL SPECIFICATIONS

### DECODING CAPABILITY

<b>Auto Discriminates all Retail Barcodes</b>	EAN/JAN/UPC, Code 128, EAN/JAN Composites; GS1 DataBar Composites; GS1 DataBar Expanded Stacked; GS1 DataBar Stacked; GS1 DataBar Stacked Omnidirectional; MicroPDF417; PDF417; UPC A/E Composites. Aztec Code; Data Matrix; QR Code, Micro QR, Digimarc Barcode and all future GS1 Codes.
<b>Illumination</b>	Multiple diffused LEDs: orientation and wavelength optimized for eye comfort.
<b>Scan Indicators</b>	Visual: Good-read confirmation for all reading planes; Audio: 85 dB Speaker - Adjustable Tone and Volume plus supports WAV file formats

### COMMUNICATIONS INTERFACES

<b>Host Multi-Interface</b>	RS-232 / USB Multi-Interface: OEM (IBM) USB Plus Power (Scanner / Scale); RS-232 (Scanner) / RS-232 (Scale); RS-232 (Scanner) or Single Cable RS-232 (Scanner / Scale)
<b>POS Operating Systems</b>	Windows 10, Linux, Android™; OPOS and JavaPOS utilities are available for download
<b>Auxiliary Ports</b>	Powered USB Host (Type A) (x2); Powered RS-232; Remote Scale Display; EAS Controller Ports; Sensormatic, Interlock
<b>Ethernet Ports</b>	1 x Ethernet is standard; Optional 7 Port Ethernet switch (IEEE1588) NOTE: Switch requires an external 48V power supply

### OPTIONAL SCALE FEATURES

<b>Magellan Dual Interval Scale Technology</b>	Minimum Increment: Range 1: 0.002 kg / 0.005 lb; Range 2: 0.005 kg / 0.010 lb Scale Capacity: Range 1: 0 - 6.0 kg / 0 - 15.0 lb; Range 2: 6.0 - 15.0 kg / 15.0 - 30.0 lb
<b>Magellan Single Interval Scale Technology</b>	Minimum Increment: 0.005 kg / 0.010 lb; Scale Capacity: 0 - 15.0 kg / 0 - 30.0 lb
<b>Adaptive Scale</b>	Compatibility – Adaptive Scales: Bizerba; Mettler Toledo; Max. Static Weight: 68.0 kg / 150.0 lb Vibration Immunity: 4 Filter settings

### LOSS PREVENTION

<b>All-Weighs Scale Platter</b>	Integrated horizontal and vertical scale platter surfaces increase active weighing area for easy, accurate weighing of large items.
<b>ScaleSentry</b>	ScaleSentry is an infrared platter detection system to provide shrink prevention; Configurable audio / visual indicators identify items placed outside weighing surface.
<b>EAS Features</b>	Integrated EAS Antenna for Checkpoint and Nedap. Sensormatic Deactivation Controller integrated with Datalogic SmartSentry™ technology; Scanner provides Good-read / EAS Status Indicators
<b>ScanSentry</b>	Magellan 9600i can host a variety of Artificial Intelligence solutions that improve customer experience and reduce losses at the checkout.

### PHYSICAL CHARACTERISTICS

<b>Dimensions</b>	Depth (below counter): 10.2 cm / 4 in Length: Short - 35.2 cm / 13.9 in Length: Medium - 39.9 cm / 15.7 in Length: Long - 43.7 cm / 17.2 in Width: 29.2 cm / 11.5 in 9600i height (above counter): 13.4 cm / 5.3 in
-------------------	--

### ELECTRICAL

<b>Power Requirements</b>	Scanner Power Consumption: 12 VDC Operating (Nominal): 9.3 Watts; Sleep: 7.3 Watts; Optional scanner DC brick: AC Input: 100 - 240 VAC, 50-60 Hz; Optional Ethernet 48 VDC brick: AC Input: 100 - 240 VAC, 50-60 Hz
---------------------------	--

### ENVIRONMENTAL

<b>Ambient Light</b>	0-86,080 lux
<b>ESD Protection</b>	25 kV air discharge
<b>Humidity (Non-Condensing)</b>	5 - 95%
<b>Temperature</b>	Operating: 10 to 40 °C / 50 to 104 °F Storage/Transport: -40 to 70 °C / -40 to 158 °F

### SAFETY & REGULATORY

<b>Agency Approvals</b>	The product meets necessary safety and regulatory approvals for its intended use. See the Quick Reference Guide for a complete list of certifications.
<b>Environmental Compliance</b>	Complies to China RoHS; Complies to EU RoHS; Complies to R.E.A.C.H. - EC1907/2006

### UTILITIES

<b>Aladdin™ Configurator</b>	Datalogic Aladdin provides customers the opportunity to manage the configuration of handheld or fixed position products, and allows firmware updates, advanced formatting through an intuitive user interface.
<b>Magellan SDK(s)</b>	Datalogic will provide developer tools to support POS integration and the optional AI enablement HW functionality (Color cameras, Neural Processors, and Ethernet expansion).
<b>Remote Management Capabilities</b>	Current Diagnostic reporting utilizes WMI (OPOS and JavaPOS) and MBeans (JavaPOS); Host Download Supports IBM Director, Wavelink Avalanche™ and other ERP management solutions.

### FUTURE AI ENABLEMENT FEATURES (OPTIONAL)

<b>Image Capture</b>	Magellan 9600i offers two color cameras (VCCM and HCCM) for AI inference models image collection.
<b>Tensor Processors</b>	Magellan 9600i offers a Coral TPU for processing AI inference models inside the scanner.
<b>Ethernet Switch</b>	A 7 port ethernet switch allows the Magellan to connect up to 2 integrated and 4 external cameras for creating a 'zone of cognition'.

### WARRANTY

<b>Warranty</b>	1-Year Standard Factory Warranty
-----------------	----------------------------------

## ACCESSORIES



90ACC0340 Single Display/Single Interval



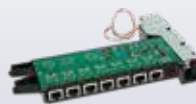
90ACC0343 Dual Display/Single Interval



Vertical Color Camera (VCCM)



Horizontal Color Camera (HCCM)



Ethernet Switch



Tensor Processing Unit (TPU)