

Datalogic S.r.l.

Via San Vitalino 13
40012 Calderara di Reno (BO)
Italy
Tel. +39 051 3147011
Fax +39 051 3147205

©2022-2023 Datalogic S.p.A. and/or its affiliates

All rights reserved. Without limiting the rights under copyright, no part of this documentation may be reproduced, stored in or introduced into a retrieval system, or transmitted in any form or by any means, or for any purpose, without the express written permission of Datalogic S.p.A. and/or its affiliates.

Owners of Datalogic products are hereby granted a non-exclusive, revocable license to reproduce and transmit this documentation for the purchaser's own internal business purposes. Purchaser shall not remove or alter any proprietary notices, including copyright notices, contained in this documentation and shall ensure that all notices appear on any reproductions of the documentation.

Electronic versions of this document may be downloaded from the Datalogic website (www.datalogic.com). If you visit our website and would like to make comments or suggestions about this or other Datalogic publications, please let us know via the "Contact" page.

Disclaimer

Datalogic has taken reasonable measures to provide information in this manual that is complete and accurate, however, Datalogic shall not be liable for technical or editorial errors or omissions contained herein, nor for incidental or consequential damages resulting from the use of this material. Datalogic reserves the right to change any specification at any time without prior notice.

Trademarks

Datalogic and the Datalogic logo are registered trademarks of Datalogic S.p.A. in many countries, including the U.S.A. and the E.U.

The Joya logo is a trademark of Datalogic S.p.A. and/or its affiliates, registered in the U.S. and the E.U. All other trademarks and brands are property of their respective owners.

Patents

See www.patents.datalogic.com for patent list.


REFERENCE DOCUMENTATION

For further information regarding the Joya Touch 22 refer to the SDK Help on-line, downloadable from our developer portal: <https://developer.datalogic.com/mobile-computers>.

SUPPORT THROUGH THE WEBSITE

Datalogic provides several services as well as technical support through its website.

Log on to www.datalogic.com.

For quick access, from the home page click on the search icon , and type in the name of the product you're looking for. This allows you access to download Data Sheets, Manuals, Software & Utilities, and Drawings.

Hover over the Support & Service menu for access to Services and Technical Support.



Multi-Purpose Device for Retail

©2022-2023 Datalogic S.p.A. and/or its affiliates

• All rights reserved • Without limiting the rights under copyright, no part of this documentation may be reproduced, stored in or introduced into a retrieval system, or transmitted in any form or by any means, or for any purpose, without the express written permission of Datalogic S.p.A. and/or its affiliates • Datalogic and the Datalogic logo are registered trademarks of Datalogic S.p.A. in many countries, including the U.S. and the E.U.

See the Safety & Regulatory Addendum included with your product for additional regulatory, safety and legal information.

www.datalogic.com



822004512 (Rev. D) April 2023

OUT OF THE BOX

The Joya Touch 22 package contains:

- Joya Touch 22 (device with battery included)
- Quick Start Guide
- Safety & Regulatory Addendum

Remove all the components from their packaging; check their integrity and compare them with all the packing documents.



CAUTION: Keep the original packaging for use when sending products to the technical assistance center. Damage caused by improper packaging is not covered under the warranty.

GENERAL VIEW

Front View



Back View



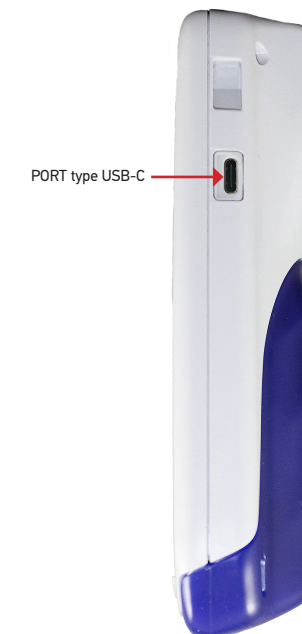
NOTE: The label artwork may be only a draft. Please refer to the label attached to the product for information about certification marks.

Top View



Side View

Handheld Models



Pistol Grip Models

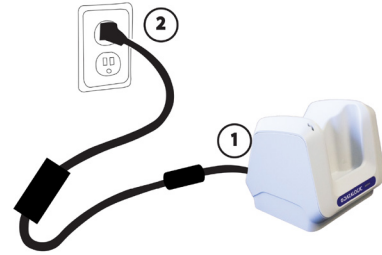


CHARGING INSTRUCTIONS

The Joya Touch 22 is provided with the battery pack already installed and configured in Ship Mode at the factory. To wake the device from Ship Mode, connect it to a power supply or insert it into a dock (for more information, see the Getting Started section of the Joya Touch 22 User's Manual). The battery pack is initially not fully charged. Before using the device, charge the battery with the single slot dock locking, the single slot dock charge only, the 3-slot cradle or the Datalogic USB-C type power supply.

Charge with the Single Slot Dock Locking

First plug the power cord into the power connector on the back of the dock, then connect the power cord to the power supply.



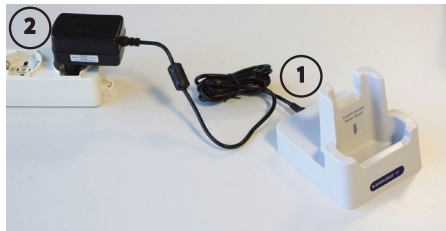
CAUTION: Use only the Datalogic power supply 91ACC0048 to power the Joya Touch Single Slot Dock Locking. The Single Slot Dock Locking cannot be daisy-chained to a Joya Touch 3-Slot Cradle.



NOTE: Insert the device into the dock with the screen facing front and the head facing down. For further information on the Joya Touch Single Slot Dock Locking, refer to the Single Slot Dock Locking Quick Start Guide, included in the dock's box.

Charge with the Single Slot Dock Charge Only

First plug the power supply into the power jack on the back of the dock, then plug the power supply into a power outlet.



CAUTION: Use only the Datalogic power supply included in the box to power the Joya Touch Single Slot Dock Charge Only.



NOTE: Insert the device into the dock with the screen facing front and the head facing down.

You can also use the Type-A/Type-C cable (p/n 94ACC0327) to charge the Joya Touch 22 from any self-powered USB hub or USB port on a computer.

Charge with the 3-Slot Cradle

There are two options to connect the cradle to the power supply: fast charge and standard charge.

Fast Charge

The fast charge connection allows to power one cradle with one power supply. Plug the power supply cable into the power connector on the back of the cradle, then plug the power supply into the AC/DC plug using a Datalogic power cable. Please see below an example of how to insert the power supply cable through the wall mounting metal bracket.



High Visibility

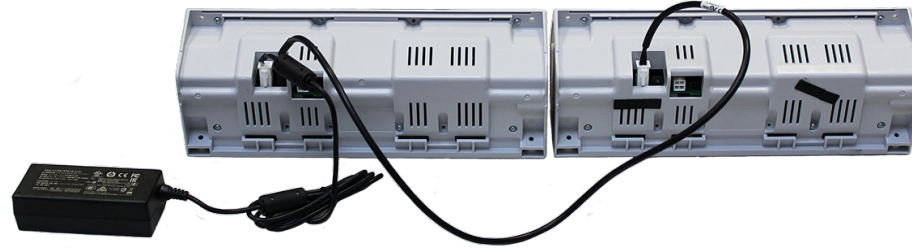


High Density

Standard Charge

The standard charge connection allows to power two cradles with one power supply. To connect a second cradle use the Joya Touch Cradle Power Jumper, available as optional accessory (P/N 91ACC0049).

1. Connect the first cradle to the second cradle using the power jumper.
2. Connect the power supply to the first cradle.
3. Plug the power supply into the AC/DC plug using a Datalogic power cable.



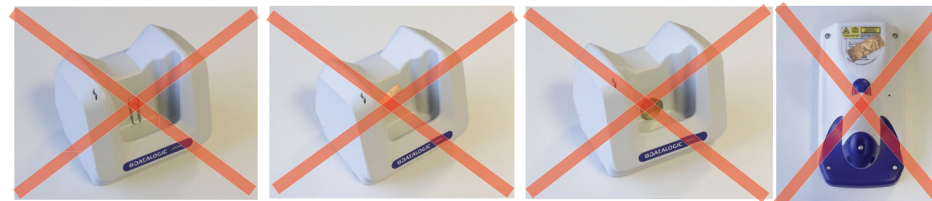
CAUTION: Use only the Datalogic power supply 91ACC0048 to power the Joya Touch 3-Slot Cradle.



NOTE: Insert the device into the dock with the screen facing front and the head facing down. Under the same conditions, the fast charge connection can charge the battery up to twice as fast as the standard charge connection. For further information on the Joya Touch 3-Slot Cradle, refer to the Joya Touch 3-Slot Cradle Quick Start Guide, included in the cradle's box, and to the Joya Touch 3-Slot Cradle Installation Guide, downloadable from our website www.datalogic.com.

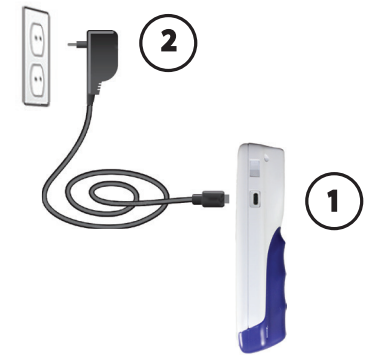


CAUTION: Do not put any foreign object such as, but not limited to, coins, paper clips, stickers inside the slot of any of the docks. Do not apply any sticker to the Joya Touch 22 (see the examples below).



CHARGE WITH USB

Use the Datalogic USB-C type power supply (p/n 94ACC0329) to charge the terminal from a power outlet.



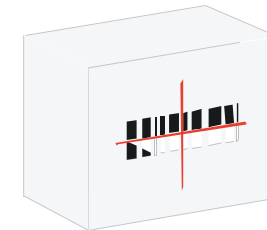
SCANNING AND IMAGING

To scan a barcode symbol:

1. Point the scan window at the barcode from a distance within the reading range.
2. Press the Scan Key or the Scan Trigger. The imager projects a laser aiming pattern similar to those used on cameras. The aiming pattern is used to position the barcode or object within the field of view.
3. Center the symbol in any orientation within the aiming pattern. Ensure the entire symbol is within the rectangular area formed by the brackets in the aiming pattern, then either wait for the timeout or release the Scan Key to capture the image. A red beam illuminates the symbol, which is captured and decoded.

If the scan has been successful:

- If enabled, the good read LED turns on.
- If enabled, the good read beep plays.
- If enabled, the Green Spot projects a green spot onto the barcode image.
- The barcode type and content data display on the screen.



Linear Bar Code

2D Matrix Symbol



Relative Size and Location of Aiming System Pattern



AVOID EXPOSURE
LASER LIGHT
IS EMITTED FROM
THIS APERTURE