



# Newland

SCANNING MADE SIMPLE



## DC850 Susu mobile computer user guide

## Disclaimer

© 2019 Fujian Newland Auto-ID Tech. Co., Ltd. All rights reserved.

Please read through the manual carefully before using the product and operate it according to the manual. It is advised that you should keep this manual for future reference.

Do not disassemble the device or remove the seal label from the device, doing so will void the product warranty provided by Fujian Newland Auto-ID Tech. Co., Ltd.

All pictures in this manual are for reference only and actual product may differ. Regarding the product modification and update, Fujian Newland Auto-ID Tech. Co., Ltd. reserves the right to make changes to any software or hardware to improve reliability, function, or design at any time without notice. The information contained herein is subject to change without prior notice.

The products depicted in this manual may include software copyrighted by Fujian Newland Auto-ID Tech. Co., Ltd or third party. The user, corporation or individual, shall not duplicate, in whole or in part, distribute, modify, decompile, disassemble, decode, reverse engineer, rent, transfer or sublicense such software without prior written consent from the copyright holders.

This manual is copyrighted. No part of this publication may be reproduced, distributed or used in any form without written permission from Newland.

### **Risk Warning Regarding Unauthorized System Updates:**

You should use the Newland-provided tool to update this product's system. Modifying system files through installing a third-party ROM system or using any cracking method may result in product malfunction or data loss and this will void your warranty.

Fujian Newland Auto-ID Tech. Co., Ltd. reserves the right to make final interpretation of the statement above.

Fujian Newland Auto-ID Tech. Co., Ltd.

No.1, Rujiang West Rd., Mawei, Fuzhou, Fujian, China 350015

<http://www.newlandaidc.com>

## Revision History

Version	Description	Date
V1.0	Initial release	2019-10-28

# Contents

<b>Chapter 1 About This Guide .....</b>	<b>1</b>
Introduction.....	1
Documentation Set.....	1
Chapter Descriptions.....	1
More Information .....	1
<b>Chapter 2 Getting Started .....</b>	<b>2</b>
Introduction.....	2
Unpacking .....	2
Getting Started .....	2
Installing the Battery.....	2
Removing the Battery.....	3
Attach the Hand Strap .....	4
Switching On the DC850 .....	4
Waking the Sleep Mode .....	4
Switching off the DC850.....	4
Charging the battery.....	4
LED Indicator and Keypad.....	5
<b>Chapter 3 Basics .....</b>	<b>8</b>
Introduction.....	8
System Menu .....	8
Run APP.....	8
SystemSet.....	9
Program .....	10
Date& Time .....	10
Communication .....	10
Keypad.....	11

LCD.....	11
Sound .....	12
Volume.....	12
Power.....	13
Services .....	13
Password .....	14
MenuSet.....	14
Barcode.....	15
U Disk .....	15
Recovery.....	16
Barcode Test .....	16
SelfTest.....	17
Keypad test.....	17
LCD Backlight test .....	18
LCD test.....	18
Beep test.....	19
Battery test.....	19
USB test.....	20
Scan Engine test.....	20
SysInfo .....	21
<b>Chapter 4 Data Transmission .....</b>	<b>22</b>
Introduction.....	22
Connected with PC.....	22
Data Transmission.....	22
USB Mode.....	22
Ethernet Mode .....	22
HID Mode.....	25
Flash Disk Mode .....	26
USB-VCOM Mode.....	27
<b>Chapter 5 Maintenance &amp; Troubleshooting.....</b>	<b>31</b>
Introduction.....	31

Important Safety & Handling Information.....	31
Disassembly and Retrofit .....	31
External Power Supply.....	31
Abnormal Situation.....	31
Drop Damage.....	31
LCD Screen .....	31
Stacking Heavy Objects.....	31
Mounting Location.....	31
Use & Maintenance.....	32
Battery Safety Guidelines.....	32
Troubleshooting.....	33

# Chapter 1 About This Guide

## Introduction

This guide provides instructions for operating the NLS-DC850 portable data collector and its accessory (hereinafter referred to as “the DC850” or “the terminal”).

## Documentation Set

The documentation set for the DC850 includes:

- ✧ ***NLS-DC850 Portable Data Collector Quick Start***: Describes how to get the NLS-DC850 up and running.
- ✧ ***NLS-DC850 Portable Data Collector User Guide***: Describes how to program and use the NLS-DC850.

## Chapter Descriptions

- ✧ *Chapter 1 About This Guide* Provides a general description of this manual.
- ✧ *Chapter 2 Getting Started* Provides information on getting the DC850 up and running for the first time.
- ✧ *Chapter 3 Basics* Describes how to program the DC850 for the use of its basic features.
- ✧ *Chapter 4 Data Transmission* Provides the instructions as to how to connect DC850 with PC and realize data transmission.
- ✧ *Chapter 5 Maintenance & Troubleshooting* Provides troubleshooting solutions for issues that might occur when using the DC850.

## More Information

For more product and support information, please visit our web site: <http://www.newlandaidc.com>.

# Chapter 2 Getting Started

## Introduction

This chapter lists the parts and accessories for the DC850 and explains how to install, remove and charge the battery, and power on the DC850 for the first time.

## Unpacking

Carefully remove all protective material from the pack and verify that the following were received:

- ✧ 1 x NLS-DC850 main unit
- ✧ 1 x USB cable
- ✧ 1 x AC adapter for the DC850
- ✧ 1 x Li-polymer battery
- ✧ 1 x Hand strap
- ✧ 1 x Quick Start manual

## Getting Started

Use the DC850 for the first time.

Step1: Install the battery.

Step2: Press the power key to switch on the DC850.

Step3: Program the DC850.

## Installing the Battery

Install the battery per below steps:

Step 1: Unlock the battery cover latches.

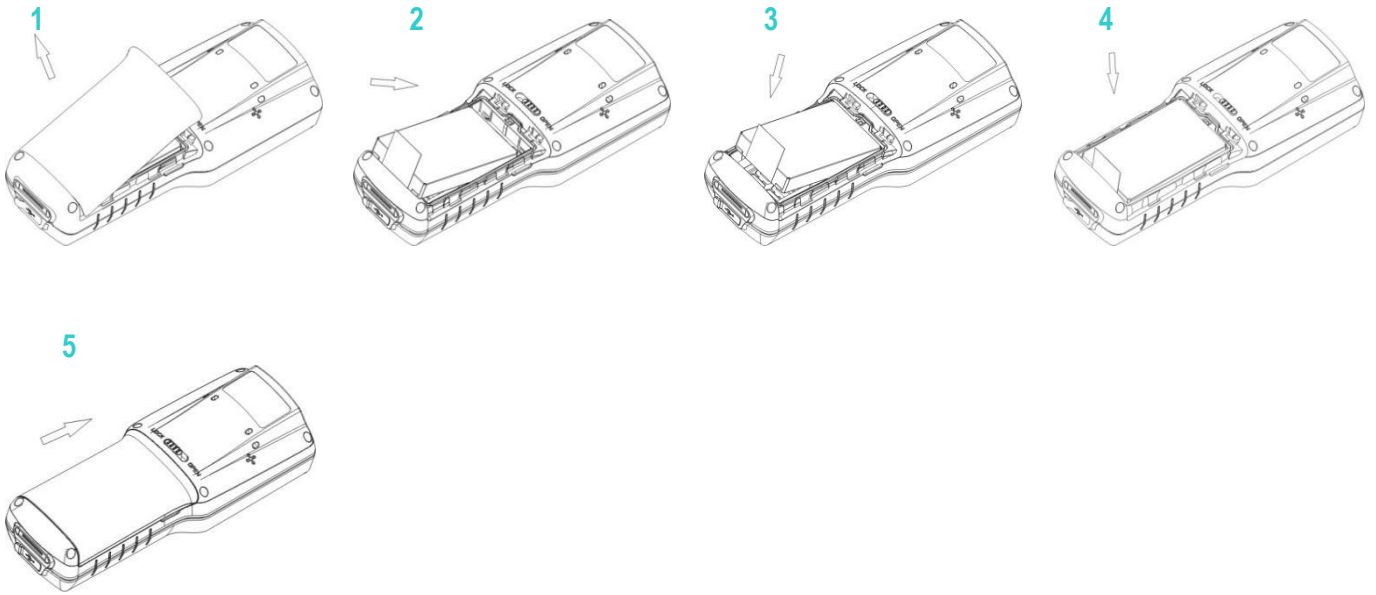
Step 2: Remove the cover.

Step 3: Insert the battery as indicated in the battery compartment, with its metal contacts facing down and lining up with the metal contacts on the inside of the terminal.



---

Step 4: Close the cover and lock the battery cover latches.



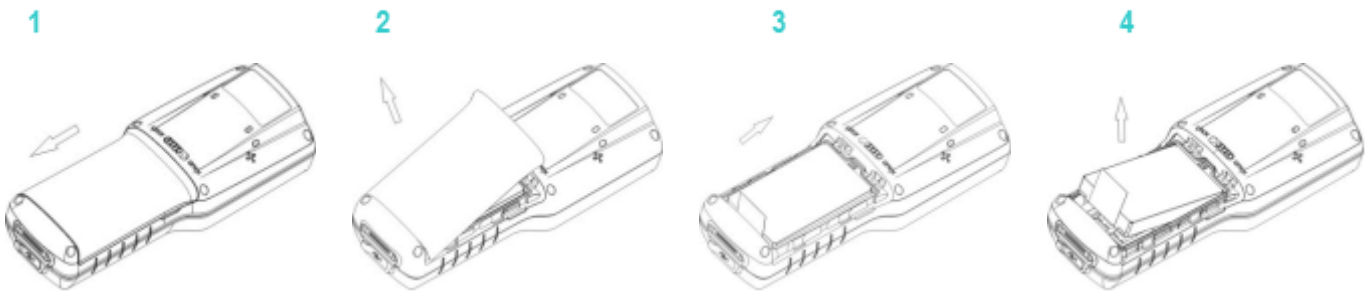
## Removing the Battery

Step 1: Long press the Power key to turn off the terminal.

Step 2: Unlock the battery cover latches.

Step 3: Remove the cover.

Step 2: Remove the battery.



---

## Attach the Hand Strap

Step 1: Insert the loop on the hand strap into the slot at the back of the device.

Step 2: Thread the upper portion of the hand strap into the loop. Pull the clip through the loop over the tether point and tighten it into place.

## Switching On the DC850

Hold down the Power key on the lower right corner of the terminal to turn on the device. Note that the initialization is going to take some time before the DC850 displays the Home screen.

## Waking the Sleep Mode

- ✧ After switching on the device, press the power key briefly will make the device in sleep mode.
- ✧ If no operation is performed on the DC850 5 for a preset period of time, the DC850 will in sleep mode automatically. You can change how long it takes for the DC850 to go into sleep mode.
- ✧ Press the power key briefly will wake the sleep mode.

## Switching off the DC850

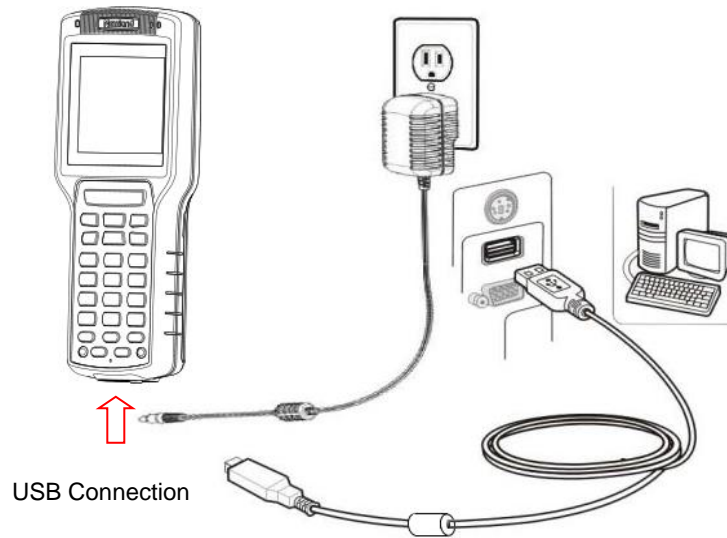
- ✧ Hold down the Power key for more than 3 seconds until the screen showing “halting”, and then the device will be in power-off mode.
- ✧ When DC850 crashed, hold down the power key for more than 10 seconds will shut down the device forcibly.
- ✧ If the DC850 is connected with USB, the system will prompt to remove the USB before switching off the DC850.

## Charging the battery

There are two methods to charge the battery.

- ✧ **Charge with AC adapter:** Connect the DC850 to a power outlet using the included AC adapter.
- ✧ **Charge with USB Cable:** Connect the DC850 to a USB port using the included USB cable.

When charging the DC850, the charging LED indicator on the terminal will be in red. When the LED turns to green, the battery fully charged. The charging time by using the AC adapter and the USB cable is different.



**Note:** When the device is in sleep mode, connect or remove the USB cable will wake up the terminal.

## LED Indicator and Keypad



---

**1. Charging LED Indicator:**

The charging LED indicator is in red when charging, and it will turn to green when fully charged. Remove the device from the power outlet, and then the LED light is off.

**2. Scan Key:**

Press it to scan the barcode.

**3. OK/ ESC Key:**

OK Key: Tap it to confirm the current step.

ESC Key: Tap it to cancel the current step.

**4. Direction Key:**

Press it to allow up, down, left, right navigation.

**5. Enter Key:**

Press it to launch an application or select a current/highlighted item.

**6. Function Key:**

ALPHA key : Press ALPHA+ESC key can close all programs.

Space key: Press it to leave space.

BASP key: Press it to delete the last character.

Backlight key: Press it to control the brightness of the screen.

**7. Power Key:**

Press it to switch on/switch off/ shut down the DC850.

8. The keypad is color-coded to indicate the alternate function keys (blue is for the "FUNC" key and orange is for the "ALPHA" key).
9. The keypad's default characters/functions are numbers (0-9), for example, press keypad in the edit page, the default output is number. For the edit page that can only enter numbers, the "ALPHA" key's switch function is invalid.
10. "ALPHA" key: press it to toggle between "Number", "English Characters" and "Chinese Characters". Enter the edit box, press "ALPHA" key once for English lowercase character, twice for Chinese character and three times for numbers. It is cycling and has durable effects.

- 
11. "ALPHA"+"SHIFT": Enter the edit box, press "ALPHA" key once for English lowercase, twice for Chinese character and three times for numbers. It is cycling and has durable effects. Press "SHIFT" to toggle between the capital letter and lowercase letter.
  12. In the FUNC mode, it will enable the blue function keys (valid for one time and not permanent). For example: to key "F7F8" firstly press "FUNC" key (prompt in the status bar), secondly press "7" key to output F7, and then press "FUNC" key again, finally press "8" key to output F8, then "F7F8" can be available.
  13. Press the "ALPHA" key to toggle between "Number", "English Characters" and "Chinese Characters". Enter the edit box, press "ALPHA" key once for English lowercase character, then press "." to enter the special character interface for selection.

---

## Chapter 3 Basics

### Introduction

This chapter provides the basics of setting and using DC850.

### System Menu



1. **Run APP:** Run the app per current system settings.
2. **SystemSet:** Set system parameters like time, power, sound, etc. per your needs.
3. **BarcodeTest:** It is an app for barcode reading.
4. **Selftest:** Test each function of the device.
5. **SysInfo:** Displays system information.
6. **Shut down:** Switch off the DC850 device

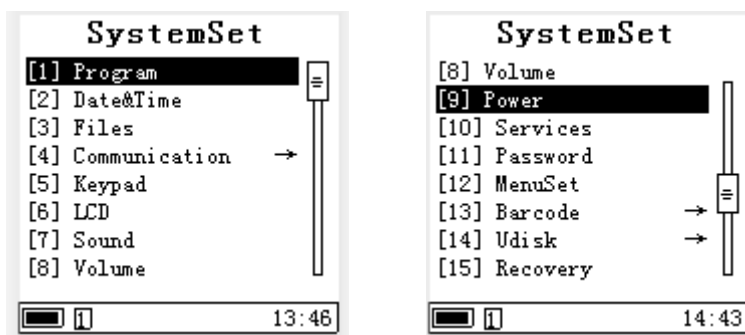
### Run APP



---

Run APP: Enter the" Run App "from the" system Menu".

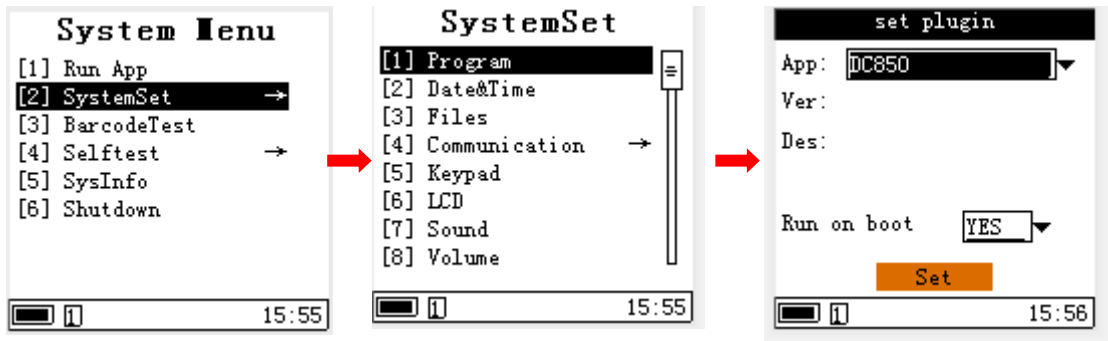
## SystemSet



1. **Program:** Enter to configure the user application.
2. **Date&Time:** Enter to Configure the System Clock.
3. **Files:** File Management for U Disk and Plugin Directory.
4. **Communication:** Enter to set USB configuration.
5. **Keypad:** Enter to set keyboard lock configuration.
6. **LCD:** Enter to set LCD backlight configuration.
7. **Sound:** Enter to set tone configuration.
8. **Volume:** Enter to set the scan volume.
9. **Power:** Enter to set the sleep mode and shutdown mode configuration.
10. **Services:** Enter to set the network service configuration.
11. **Password:** Enter to change the system password.
12. **Menu Set:** Enter to set the language per needs.
13. **Barcode:** Enter to set the barcode parameter.
14. **Udisk:** Enter to scan U disk error and format the U disk.
15. **Recovery:** Enter to restore the factory default settings.

## Program

1. In the system Menu, enter “Systemset” – “Program”—“set plugin”, then set the parameter per needs.
2. Press the “OK” button to open the drop down list. Use the direction key to select the plugin you want to select and press the “OK” button to confirm. The screen will display the current plugin information.
3. In the “Run on boot”, “Yes” selection for automatically run the current plugin for this device.
4. Press the “OK” key to confirm the setting and exit. Press the “ESC” key to cancel the setting and exit.



## Date& Time

1. In the system Menu, enter “Systemset” – “Date&Time” then set the parameter per needs.
2. Press the direction key to select the time you want to modify, and press “number key” to do the modification.
3. Press the “OK” key to confirm the setting and exit. Press the “ESC” key to cancel the setting and exit.

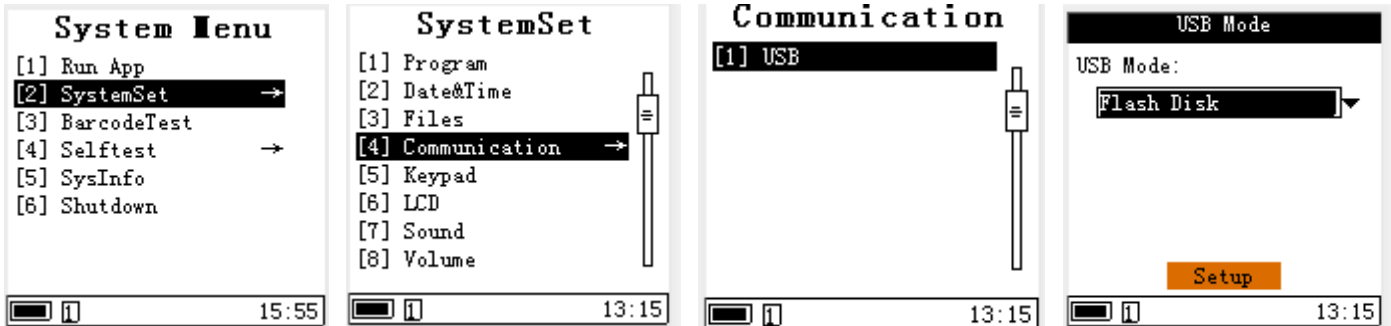


## Communication

1. In the system Menu, enter “Systemset” – “communication” – “USB” then enter the USB mode.



- In the USB mode, press the “OK” key to open the drop down list and select the parameter you need, then press the “OK” key to confirm.
- After completing the setting, move the cursor to the “Setup” button, press the “OK” button to confirm the setting and exit. Alternatively, press the “ESC” key to cancel the setting and exit.



## Keypad

- In the system Menu, enter “Systemset” – “keypad” and set the parameter per your needs.
- Select “OFF” or “ON” on the drop down list to decide whether to lock the keyboard automatically.
- After completing the setting, move the cursor to the “Setup” button, press the “OK” button to confirm the setting and exit. Alternatively, press the “ESC” key to cancel the setting and exit.



## LCD

- In the system Menu, enter “Systemset” – “LCD” and set the parameter per your needs.
- Select the time when the backlight is on in drop down list of “Backlight “as needed

3. Select the brightness level in the drop down list of "Brightness" as needed.
4. After completing the setting, move the cursor to the "Setup" button, press the "OK" button to confirm the setting and exit. Alternatively, press the "ESC" key to cancel the setting and exit.



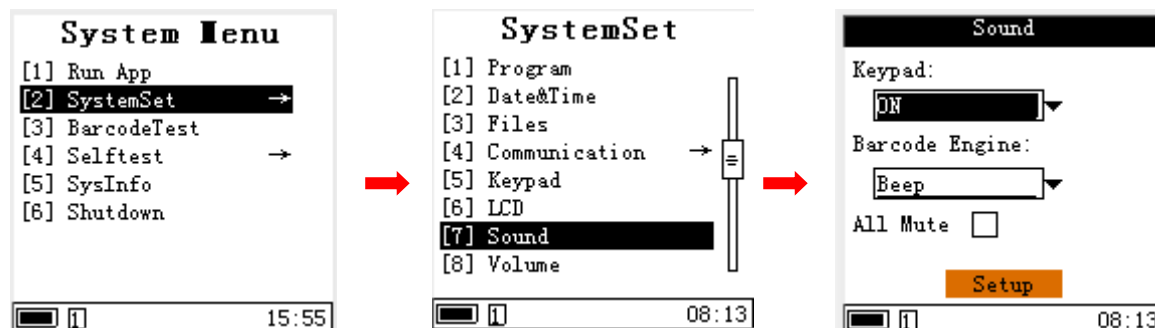
## Sound

1. In the system Menu, enter "Systemset" – "sound" and set the parameter per your needs.
2. Select "ON "or "OFF "in the dropdown list of Keypad to turn on or turn off the keypad sound.

In the dropdown list of Barcode Engine, select the reminder mode for reading barcode successfully.

If check "All Mute", close all the reminder voice for all event.

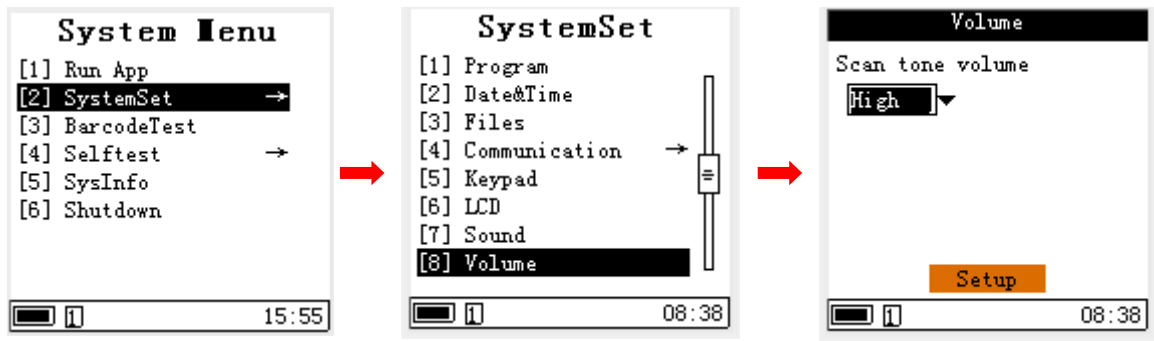
3. After completing the setting, move the cursor to the "Setup" button, press the "OK" button to confirm the setting and exit. Alternatively, press the "ESC" key to cancel the setting and exit.



## Volume

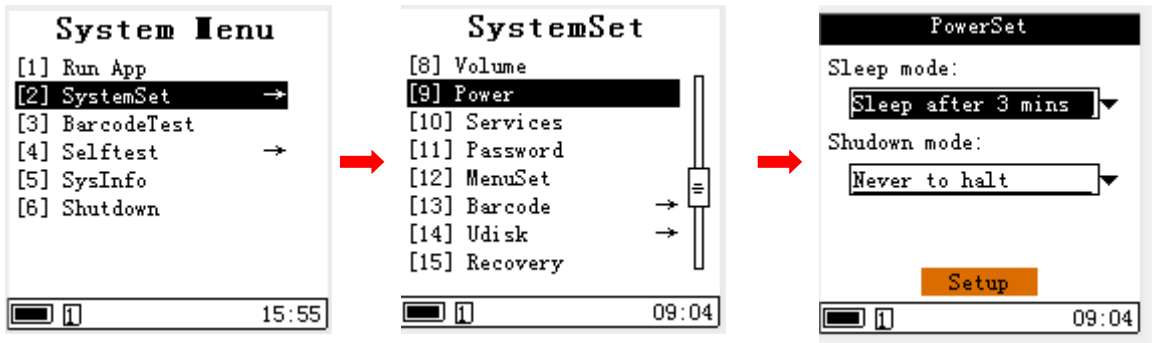
1. In the system Menu, enter "Systemset" – "Volume" and set the parameter per your needs.
2. Select "High", "Middle "or "Low "in the dropdown list and set the volume for scan tone.

3. After completing the setting, move the cursor to the “Setup” button, press the “OK” button to confirm the setting and exit. Alternatively, press the “ESC” key to cancel the setting and exit.



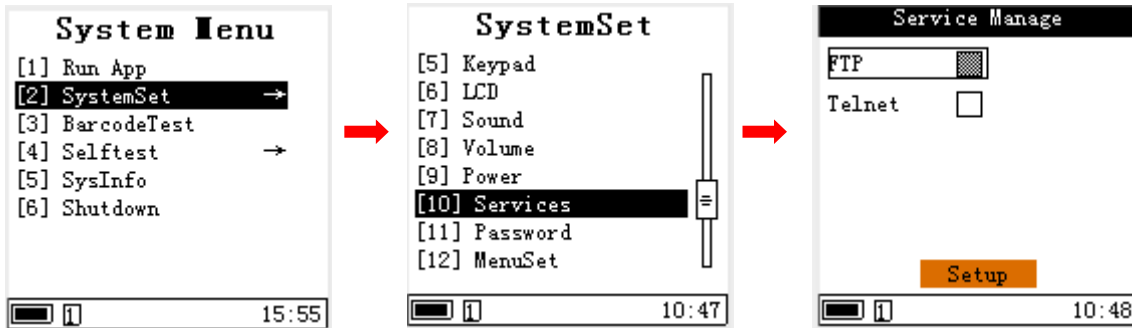
## Power

1. In the system Menu, enter “Systemset” – “Power” and set the parameter per your needs.
2. Select sleep time or never sleep in the dropdown list of “sleep mode”.  
Select halt time or never halt in the dropdown list of “shutdown mode”.
3. After completing the setting, move the cursor to the “Setup” button, press the “OK” button to confirm the setting and exit. Alternatively, press the “ESC” key to cancel the setting and exit.



## Services

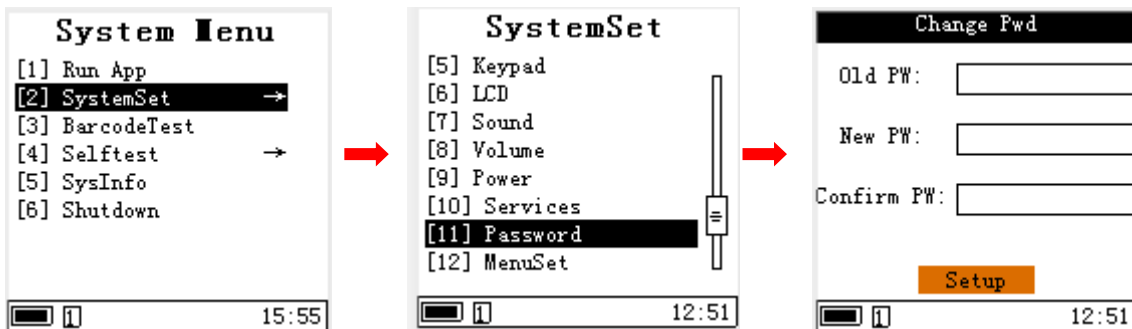
1. In the system Menu, enter “Systemset” – “Services” and set the parameter per your needs.
2. Use “up” and “down” key to select the internet service, and then press “OK”.
3. After completing the setting, move the cursor to the “Setup” button, press the “OK” button to confirm the setting and exit. Alternatively, press the “ESC” key to cancel the setting and exit.



## Password

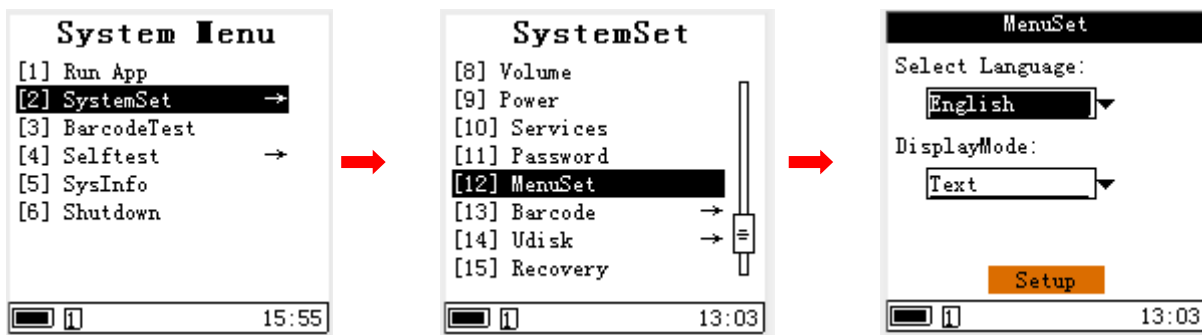
1. In the system Menu, enter "Systemset" – "password" and set the parameter per your needs.
2. Input the old password and a new one.
3. After completing the setting, move the cursor to the "Setup" button, press the "OK" button to confirm the setting and exit. Alternatively, press the "ESC" key to cancel the setting and exit.

Note: the default password is "159951".



## MenuSet

1. In the system Menu, enter "Systemset" – "MenuSet" and set the language per your needs.
2. After completing the setting, move the cursor to the "Setup" button, press the "OK" button to confirm the setting and exit. Alternatively, press the "ESC" key to cancel the setting and exit.



## Barcode

1. In the system Menu, enter "Systemset" – "Barcode" and set the parameter per your needs.
2. Enter the "BarcodeSet" to turn on /off the decoding barcode.
3. Enter "Type Check" to check the current reading module type.
4. Enter the "Recovery" to restore the factory default configuration.



## U Disk

1. In the system Menu, enter "Systemset" – "Udisk" and set the parameter per your needs.
2. Enter "Udisk Chk" to scan and fix the USB flash disk. Enter "Format UDisk" to format all data on the flash disk.
3. Press the "OK" key to confirm and exit after all operate successfully.



### Recovery

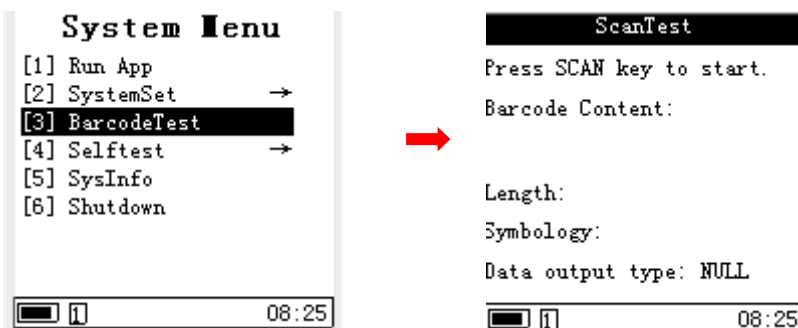
1. In the system Menu, enter "Systemset" – "Recovery" and set the parameter per your needs.
2. Press the "OK" button to confirm the setting and exit. Alternatively, press the "ESC" key to cancel the setting and exit.

Note: all custom settings will be lost after reset the default setting.

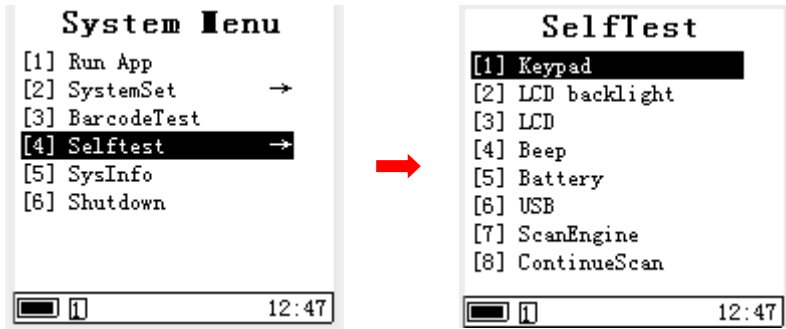


### Barcode Test

1. In the system Menu, enter "BarcodeTest, and press the "SCAN" Key to start the barcode reading test.
2. Press the "ESC" key to cancel the setting and exit.



## SelfTest



Note: if the device fails, you can locate the problem with the Selftest menu.

### Keypad test

1. In the system Menu, enter "SelfTest", and press "Keypad".
2. The screen displays the prompt of all keys. When you press a key, the corresponding prompt disappears, if it does not disappear, and then indicate a problem with the corresponding key.
3. Exit the keyboard test by pressing the "ESC" key twice.



---

## LCD Backlight test

1. In the system Menu, enter "SelftTest", and press "LCD backlight".
2. Turn on or turn off the LCD backlight as displayed on the screen.
3. Exit the LCD backlight test by pressing the "ESC" key.



## LCD test

1. In the system Menu, enter "SelftTest", and press "LCD".
2. The system will automatically conduct a screen display test, which can check the bright or dark spots on the screen.
3. Press the "ENT" key to exit the test.





## Beep test

1. In the system Menu, enter "SelftTest", and press "Beep".
2. Users can choose short, middle, or long options to conduct the beep test as shown on the screen.
3. Press the "ESC" key to exit the test.

Note: for the beep test, pleas disable the "All Mute" option in sound settings.



## Battery test

1. In the system Menu, enter "SelftTest", and press "Battery".
2. The screen will display the battery information.
3. Press the "ESC" key to exit the test.



## USB test

1. In the system Menu, enter “SelfTest”, and press “USB”.
2. If the device does not connect with the USB cable, the system will prompt a note.
3. Open a text document on PC, then press the “OK” key in the DC850, the system will send characters to text document through the HID way.

Note: USB test will automatically set USB working mode as HID, and users can modify to other modes in the “SystemSet” setting.



## Scan Engine test

In the system Menu, enter “SelfTest”, and press “ScanEngine” or “ContinueScan”.

ScanEngine: Press Scan key to start the barcode reading.

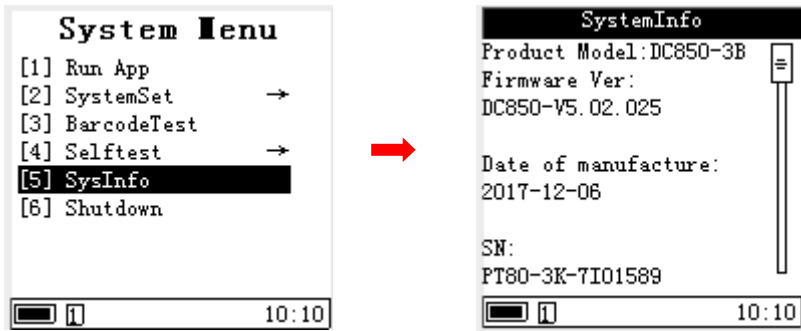
Continue Scan: Press Scan key to start the barcode reading, and can automatically reading the barcode.



---

## SysInfo

In the system Menu, enter “SysInfo”, and it will display system information about DC850, such as firmware version, manufacture date, barcode engine, etc.



---

## Chapter 4 Data Transmission

### Introduction

This chapter describes how to connect the DC850 to a PC and realize the data transmission.

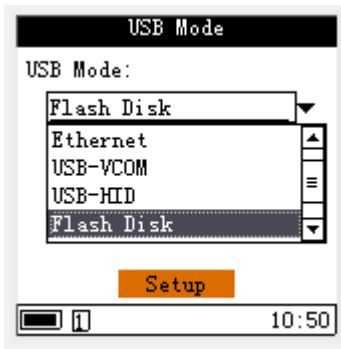
### Connected with PC

Open the "USB port protection rubber" at the bottom of the DC850, then connect the device with PC via the USB cable included.

### Data Transmission

#### USB Mode

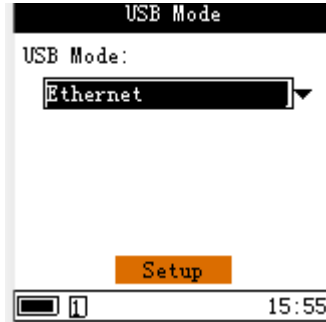
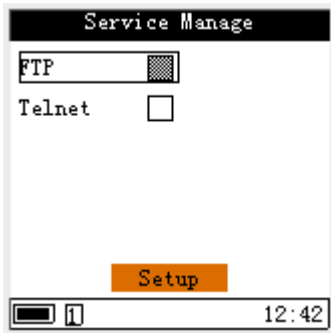
Press "Systemset" in the System Menu-- "communication"--"USB", then it will display six USB modes: COM Download, Ethernet, USB-VCOM, USB-HID, Flash Disk, MTP, please set the parameter per needs.



#### Ethernet Mode

Step 1: Press "Systemset" in the System Menu-- "services"--Select "FTP", then press "setup" to save the settings.

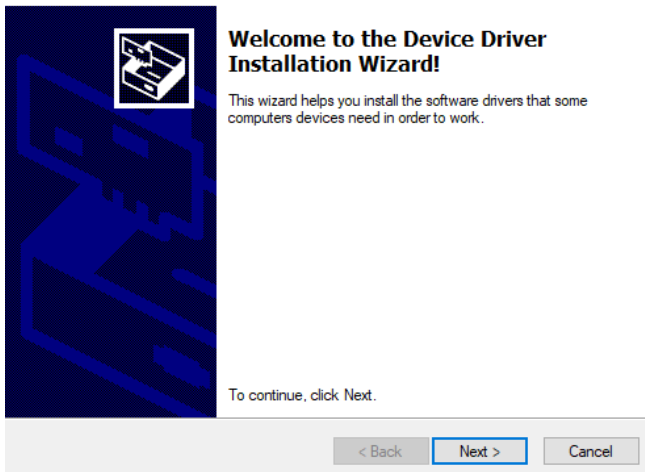
Step 2: Press "Systemset" in the System Menu-- "communication"-- "USB"--select "Ethernet" in the USB mode, then press the "setup" to save the setting. After set successful, connect the DC850 with PC via USB cable.



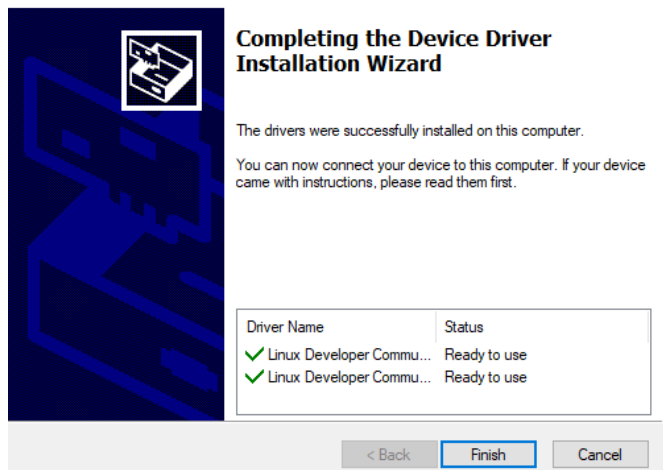
## Install usb2ethernet driver

Step 1: Install the usb2ethernet driver (DC850\_usb2ethernet\_driver\_signed) in the PC.

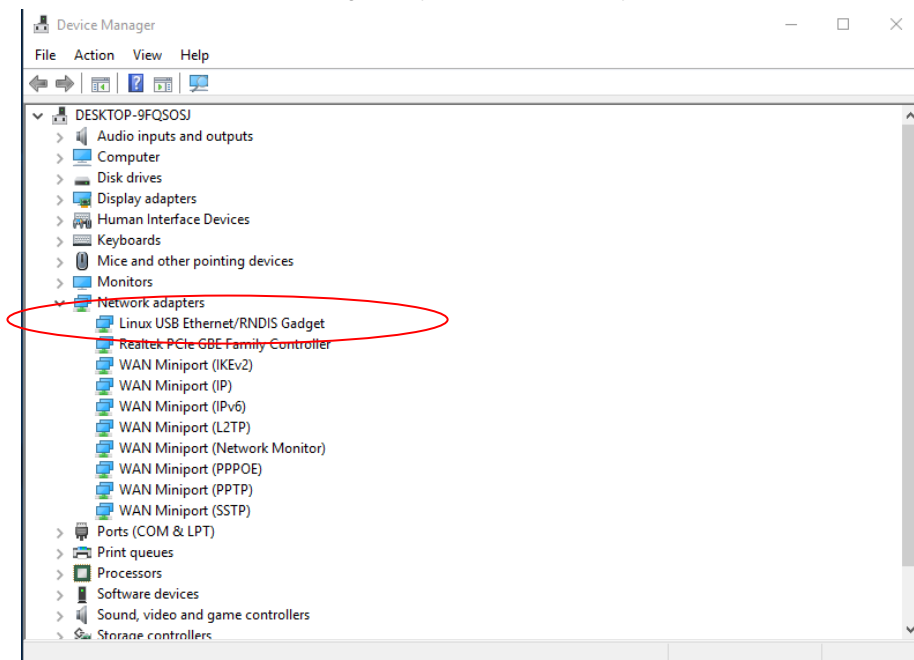
Device Driver Installation Wizard



Device Driver Installation Wizard



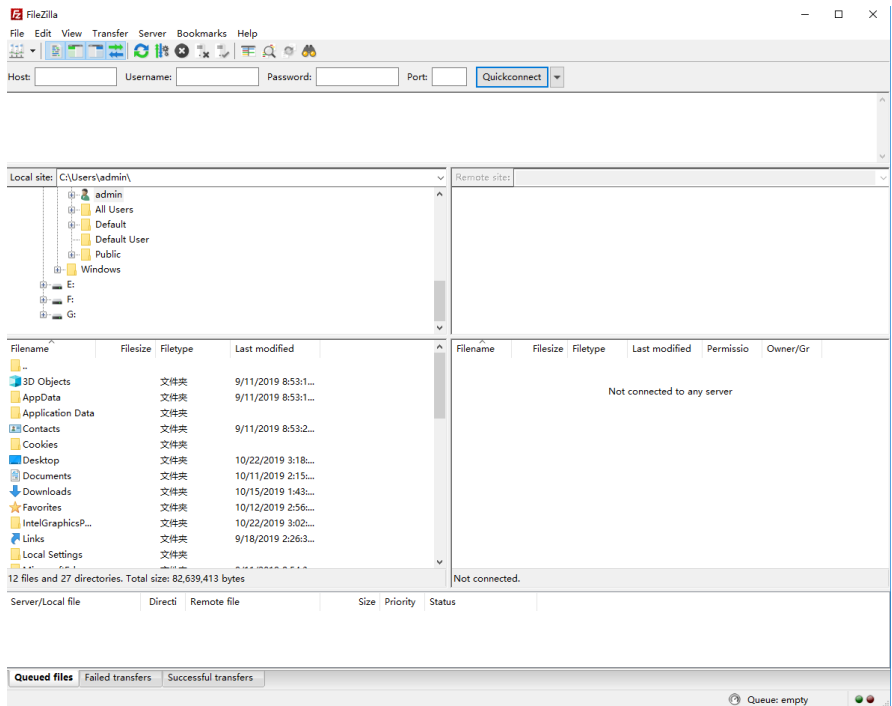
Step 2: Go to the device manager on your PC, and then you will find the *Linus USB ethernet /RNDIS Gadget*.



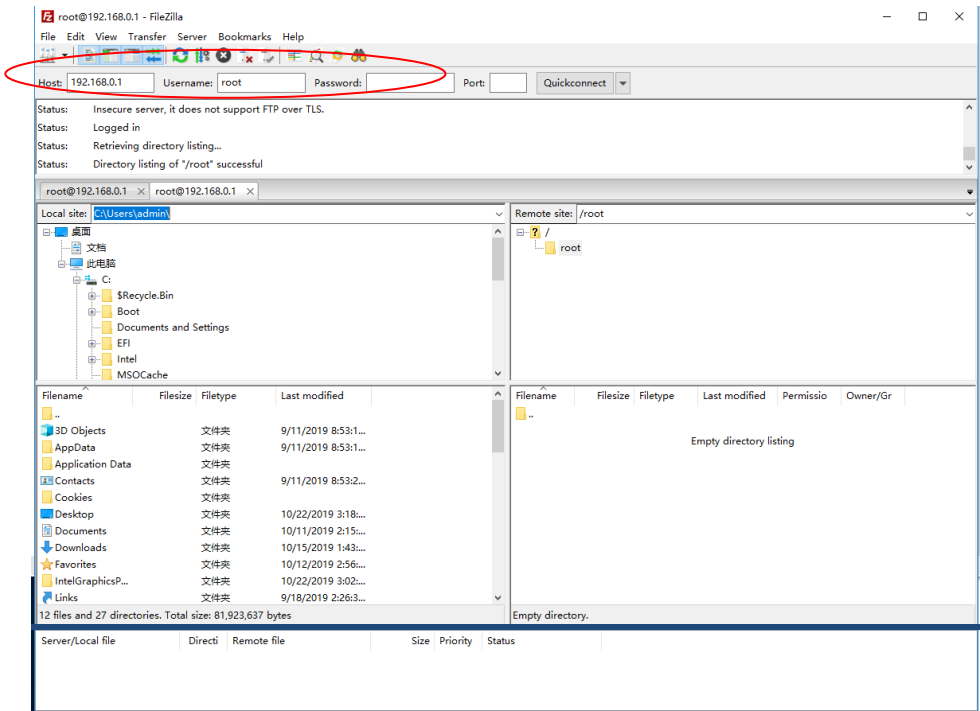
## Data Transmission under "Ethernet" Mode

After the driver installation is complete, a fixed IP address will be assigned to the network card on the DC850 device: 192.168.0.1. You can use remote tools to log in to the IP address and manage files on DC850 devices (copy, paste, delete, etc.).

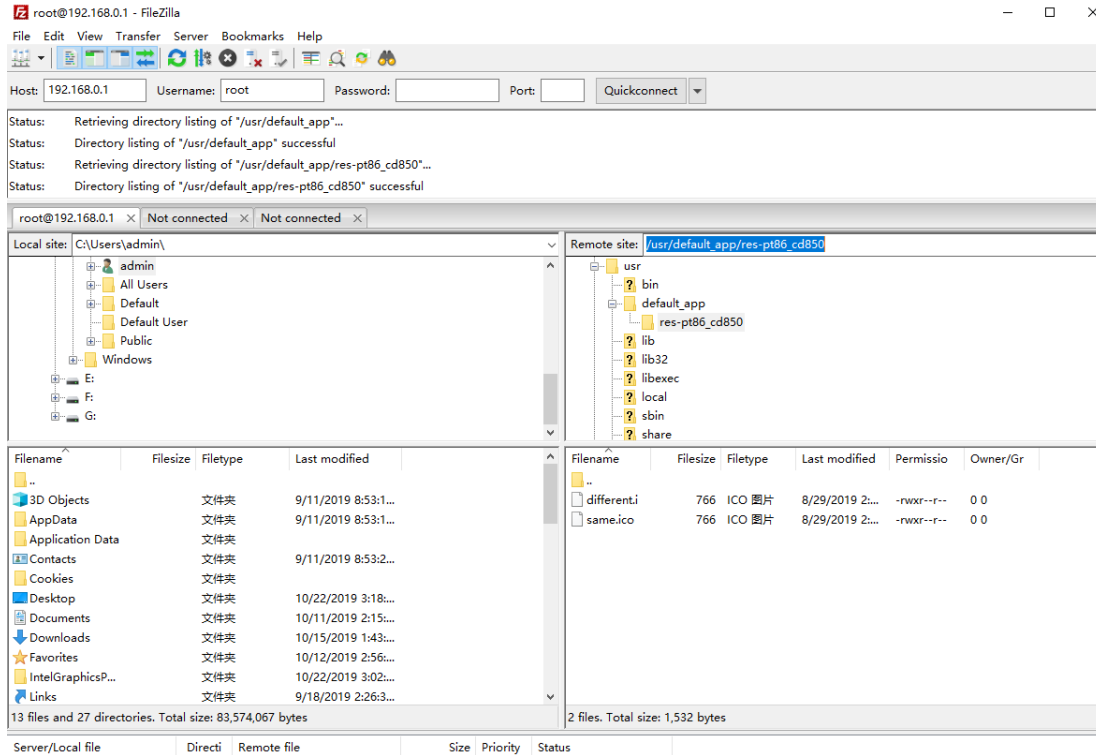
The remote tool can be chosen as you like; here we use the "FileZilla" as an example. Open the remote tool and the following screen will display.



Fill host with "192.168.0.1" and user name with "root", leave the password blank, and click "quick connection". After a successful connection, the following interface appears:

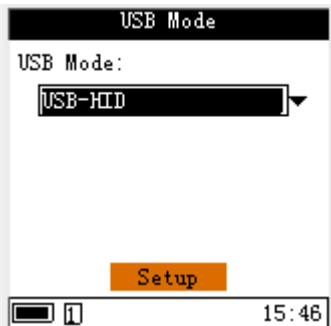


In the remote site, select the direction: `/usr/default_app/res-pt86_cd850`, which contains the plugins (or programs) for the DC850 device as shown below. Users can upload, download, or delete the file in this directory.



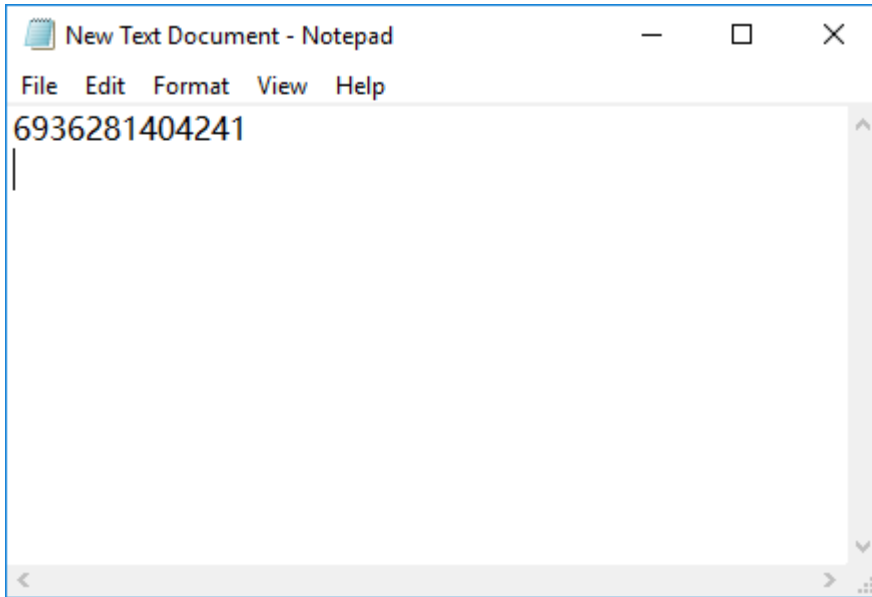
## HID Mode

Step 1: Select the USB-HID in the USB Mode, then press the "Setup" to save the setting.



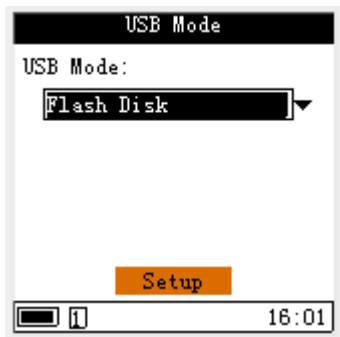
Step 2: Connect the DC850 with the computer via USB cable.

Step 3: In this mode, the barcode data scanned by DC850 device will be displayed in the TXT file opened on PC, as shown below:



## Flash Disk Mode

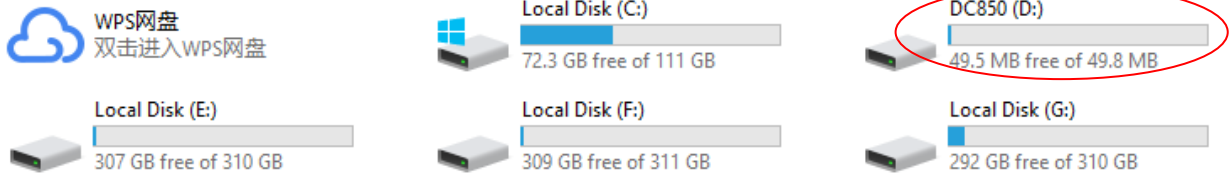
Step 1: Select the "Flash Disk" in the USB Mode, then press the "Setup" to save the setting.



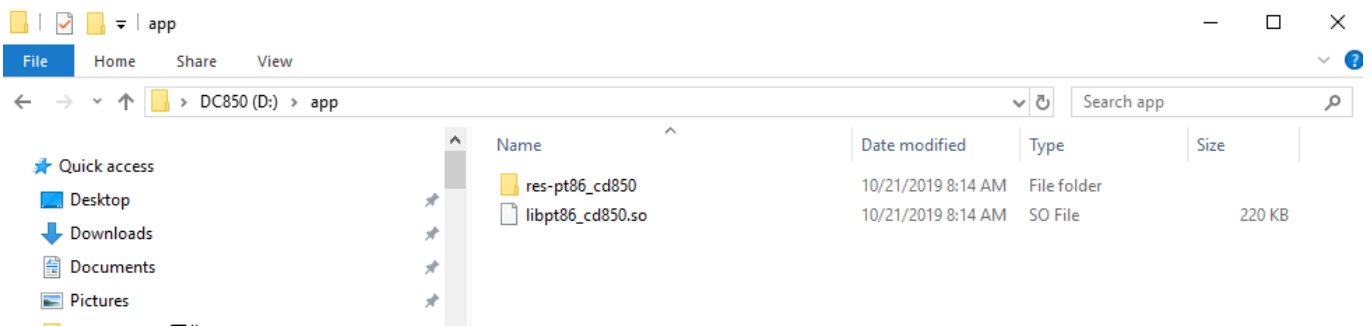
Step 2: Connect the DC850 with PC via USB cable. Then you will find the U drive in PC. In this mode, the DC850 can be used as a flash drive. Compared with the "read-only" flash drive, the file in the DC850 drive can be writable and readable.



## Devices and drives (6)

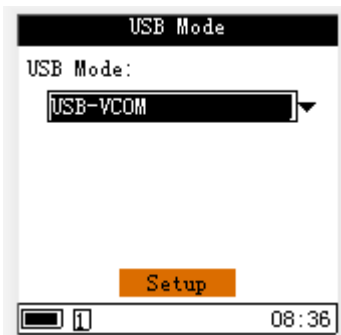


The app folder contains plugins (programs) for DC850 devices. You can copy, modify or delete programs that you need on DC850 under this folder.



## USB-VCOM Mode

Step 1: Select the "USB-VCOM" in the USB Mode, then press the "Setup" to save the setting.

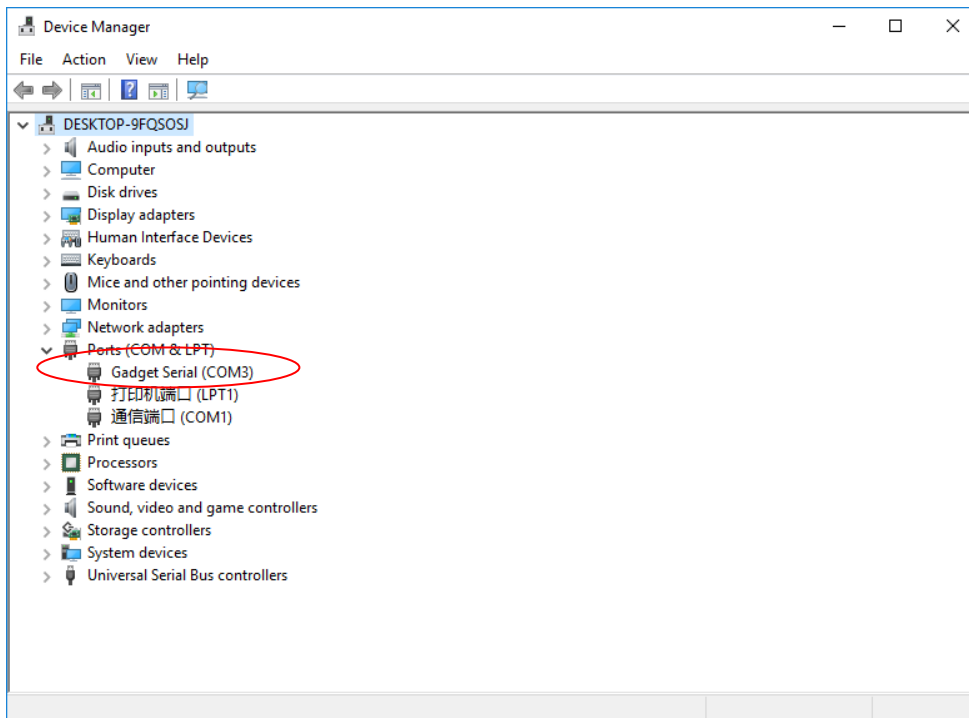


---

## Install vcom driver

Step 2: Install the VCOM driver, which is the same installation package as usb2ethernet driver, if the computer has already install file, then no need to install again.

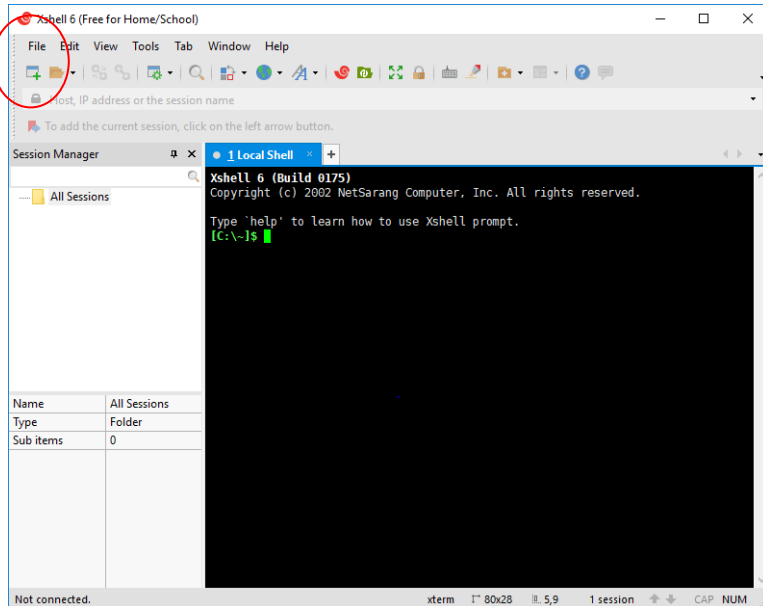
Step 3: Connect the DC850 with PC via USB cable. Then you will find below screen in the device manager of PC.



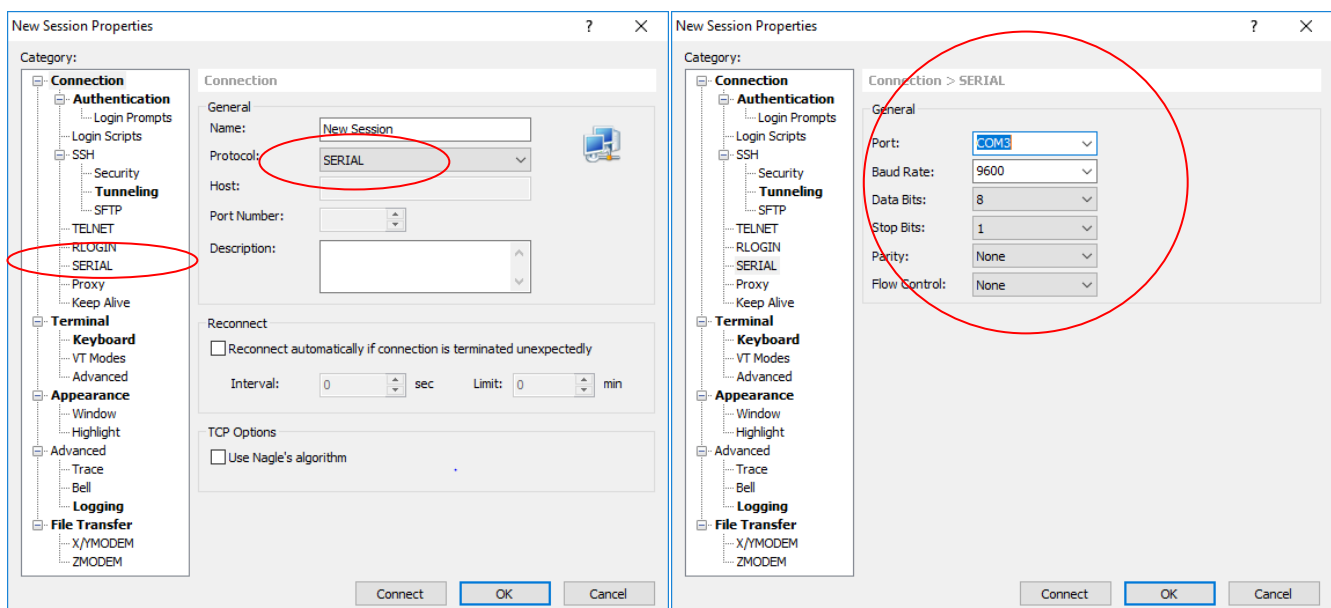
## Vcom Usage

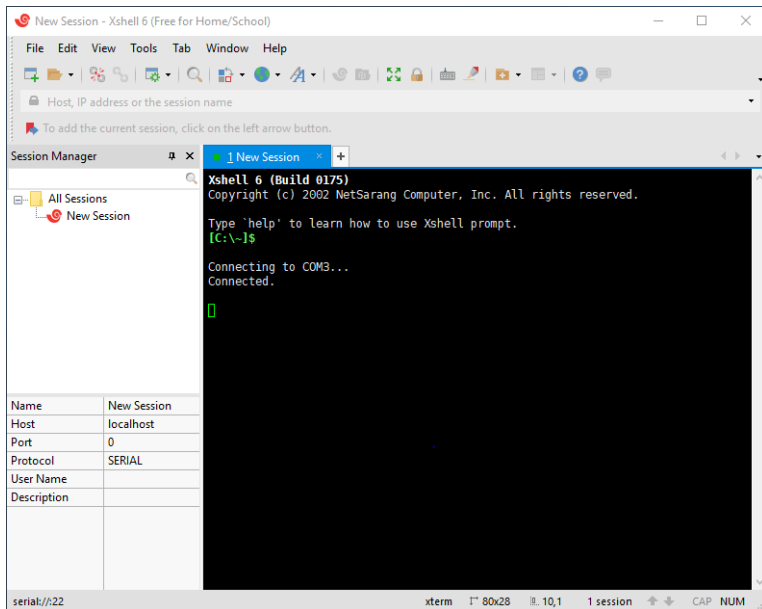
Step 1: Open the COM debug tool, here we take the hyper terminal tool (Xshell personal) as reference.

Step 2: press the “” key on the software.



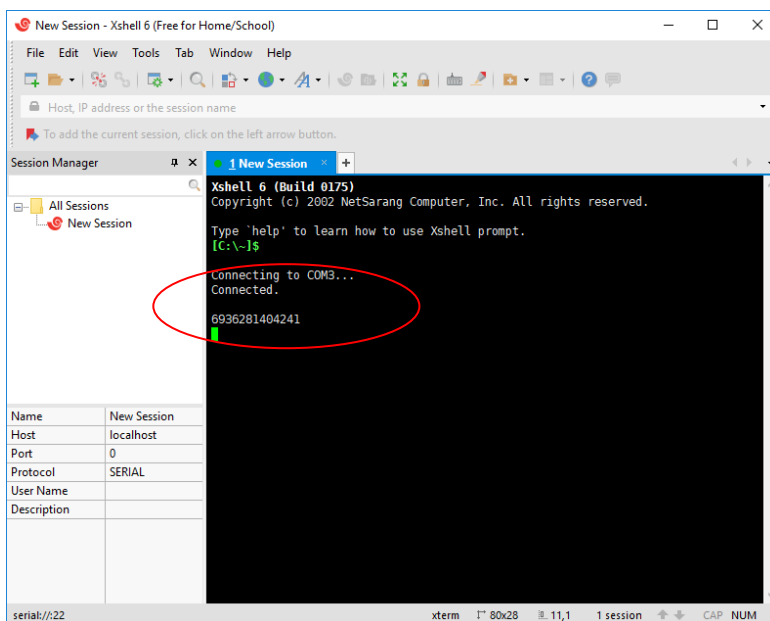
Step 3: Select “serial” on the Protocol, and click the “SERIAL” on the category directory and set other parameters per below screen, then press the connect button.





Note: The port 0 should be the same as the serial number on your PC with "Gadget Serial"(here is COM3).

Step 4: Open the "BarcodeTest" in the system menu of DC850, then press the scan key and read the barcode. The barcode data will be displayed on the hyper terminal of PC as shown below:



Note: the USB mode should be under USB-VCOM.

# Chapter 5 Maintenance & Troubleshooting

## Introduction

This chapter includes important safety and handling information and provides troubleshooting solutions for issues that might occur when using the terminal.

## Important Safety & Handling Information

### Disassembly and Retrofit

Do not disassemble or retrofit the terminal by yourself. Unauthorized disassembly or retrofit will void the warranty.

### External Power Supply

Use only the included AC adapter. Otherwise, there is a risk of damage to the terminal.

### Abnormal Situation

Keep the terminal away from fire or heat sources. If there is an unusual odor, overheating or smoke during charging, immediately cut off the power and disconnect the AC adapter, and contact your dealer or Newland customer service center. Continued use in this case may result in fire or electric shock.

### Drop Damage

If the terminal is damaged due to a drop from a high place, immediately cut off the power and contact your dealer or Newland customer service center.

### LCD Screen

Do not press against or strike the LCD screen. Otherwise, it may damage the screen. When handling a cracked or shattered screen, do not touch the liquid that has leaked from it to avoid skin burn or infection.

### Stacking Heavy Objects

Do not place heavy objects on the terminal as those objects may fall and cause injury.

### Mounting Location

Do not place the terminal on unstable or uneven surfaces as it may fall and cause injury. Do not expose the terminal to humidity or dust as this may cause fire or electric shock. Do not expose the terminal to direct sunlight for extended periods.

---

## Use & Maintenance

- ✧ If the terminal cannot be switched on after experiencing a sudden or unexpected power loss or other abnormalities, remove and then reinstall its battery to reset the terminal.
- ✧ Do not throw, drop or strike the terminal. Doing so may damage the LCD display, interrupt running programs, cause data loss in memory and result in malfunction.
- ✧ Clean the scan window regularly. Do not touch it with hands. Scratched or smudged window may degrade reading performance.
- ✧ Do not tap the touch screen with sharp objects. Doing so may damage the screen or cause internal short circuits.
- ✧ Only use a dry soft cloth to clean the terminal. Cleaning it with a wet cloth or benzene/ thinner/ other volatile chemicals may deform and shorten the service life of the keypad and shell of the terminal.
- ✧ Do not place the terminal facedown on any surface, or there might be misoperations.
- ✧ Sudden temperature drops may cause condensation on the shell, which could cause malfunction. Care should be taken to avoid condensation. If condensation occurs, dry the terminal before use.

## Battery Safety Guidelines

- ✧ **Do not dispose of batteries in a fire as they may explode.**
- ✧ The battery can be charged and discharged over 500 times. If the battery life is unreasonably short, please replace the battery with a new one.
- ✧ Use only the included battery and AC adapter.
- ✧ Do not continue to charge a battery that is fully charged. Overcharging will shorten battery lifespan. If a fully charged battery is not used, it will discharge slowly, which does not affect its normal use.
- ✧ Do not use damaged or faulty AC adapters or batteries.
- ✧ **Properly dispose of and recycle batteries. Do not dispose of them as household garbage.**

## Troubleshooting

Problem		Possible Cause & Solution
Type	Description	
Battery	Charging LED is OFF when charging.	Ensure the AC adapter is plugged in properly.
	Noticeably short battery life.	<ol style="list-style-type: none"> <li>1. Check the battery level. If the battery is almost depleted, recharge it.</li> <li>2. Replace the battery if it is faulty.</li> </ol>
	A fully charged battery is depleted after the terminal is switched on.	If the battery is faulty, replace it with a new one.
USB	USB communication failure	<ol style="list-style-type: none"> <li>1. Ensure that the USB cable connections are secure.</li> <li>2. Ensure that there is no contaminant inside the Micro USB port.</li> <li>3. Ensure the terminal is in the right USB mode.</li> <li>4. If the problem remains, please contact the after-sales service center.</li> </ol>
LCD Screen	No display	<ol style="list-style-type: none"> <li>1. Ensure the terminal is switched on.</li> <li>2. If the terminal is in sleep mode, press the Power key to wake it up.</li> <li>3. Check the battery level. If the battery is depleted, recharge it.</li> <li>4. Ensure that the battery is properly installed.</li> <li>5. Replace the battery if it is faulty.</li> <li>6. If the problem remains, please contact the after-sales service center.</li> </ol>
System	Cannot switch on	<ol style="list-style-type: none"> <li>1. Check the battery level. If the battery is depleted, recharge it.</li> <li>2. Switch the terminal on after using the included AC adapter to connect it to a power outlet. If the problem disappears, then continue to charge the terminal. If the problem remains after charging the terminal for a while, replace the battery.</li> </ol>
	System halted	<ol style="list-style-type: none"> <li>1. Use a needle to press the reset button located under the “Func” and “Alpha” keys on the front of the terminal.</li> <li>2. If the problem remains, please contact the after-sales service center.</li> </ol>
Barcode	Barcode reading failure	<ol style="list-style-type: none"> <li>1. Ensure reading the barcode in the right way.</li> <li>2. Set the barcode type to be readable.</li> <li>3. If the problem remains, the device may not be able to read this type of barcode.</li> </ol>



# Newland

SCANNING MADE SIMPLE

---

Newland EMEA HQ  
+31 (0) 345 87 00 33  
[info@newland-id.com](mailto:info@newland-id.com)  
[newland-id.com](http://newland-id.com)

Need more info? Contact us or one of  
our partners at [newland-id.com/partners](http://newland-id.com/partners)